

Zeutschel OS Q0



OS Q0

The new dimension of book scanning

The OS Q Scanner Generation is the result of new technological developments as well as our consistent work on technical innovations. It fulfills the highest demands under the headings of image quality, process efficiency and productivity.

The unique image quality of the OS Q is based on the perfect interplay of especially high-quality technical components. Thus, the image quality of the OS Q extends far beyond the requirements of all common digitalization standards, e.g. ISO 19264, Metamorfoze or FADGI.

The scanning system features a completely new and self-developed camera system based on a CMOS sensor. The camera features a high dynamic range and is also capable of reproducing the finest gradations. The

result: sharp, low-noise, high-contrast images which reflect even the finest details true to the original.

A special guided lighting of the LED lighting system with a constant angle enables the OSQ to reproduce even difficult originals free from reflection or shadowing. Reflections on shining surfaces or shadows in the book fold are optically corrected.

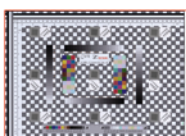
A CRI value of over 97 combined with optimally matched camera and lighting components enable excellent color rendering. The OS Q sets the reference mark for high scanning productivity.

The OS Q Book Scanner series achieves the highest efficiency in the scanning process through the perfect interplay with

tried and tested Zeutschel imaging systems. Functions such as self-opening glass panes, sliding self-balancing book supporting plates and a scanning automatic system ensure the highest productivity levels.

The OS Q Book Scanner is designed as a flexible modular system. If the requirements and tasks increase, it can be expanded in a modular way.

Both an optical zoom and a macro lens for imaging small-format originals can be added as additional accessories. In addition, the settings of the OS Q can be adjusted to the task at hand. For example, lighting time and aperture can be set variably.



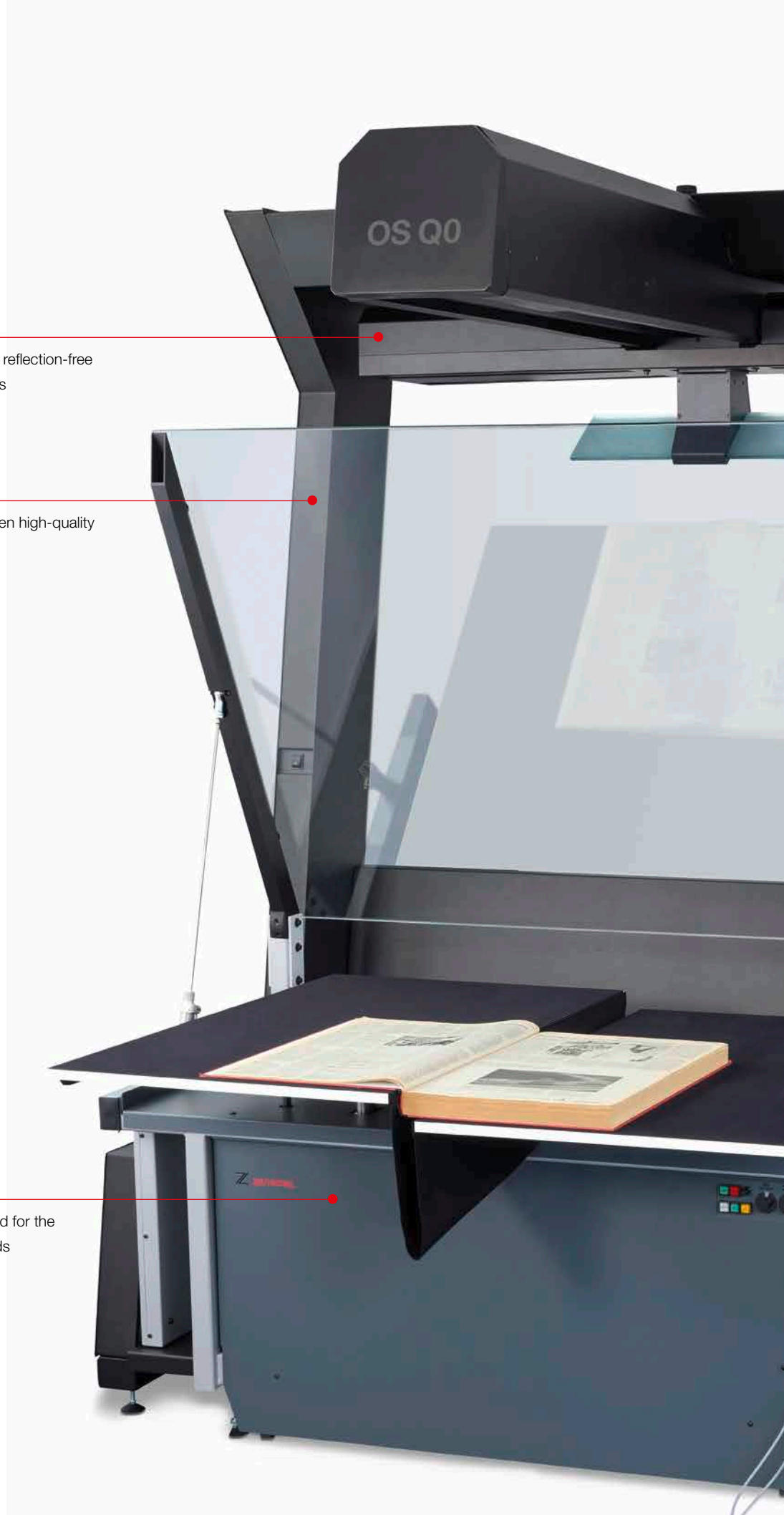
Erfüllt die Standards

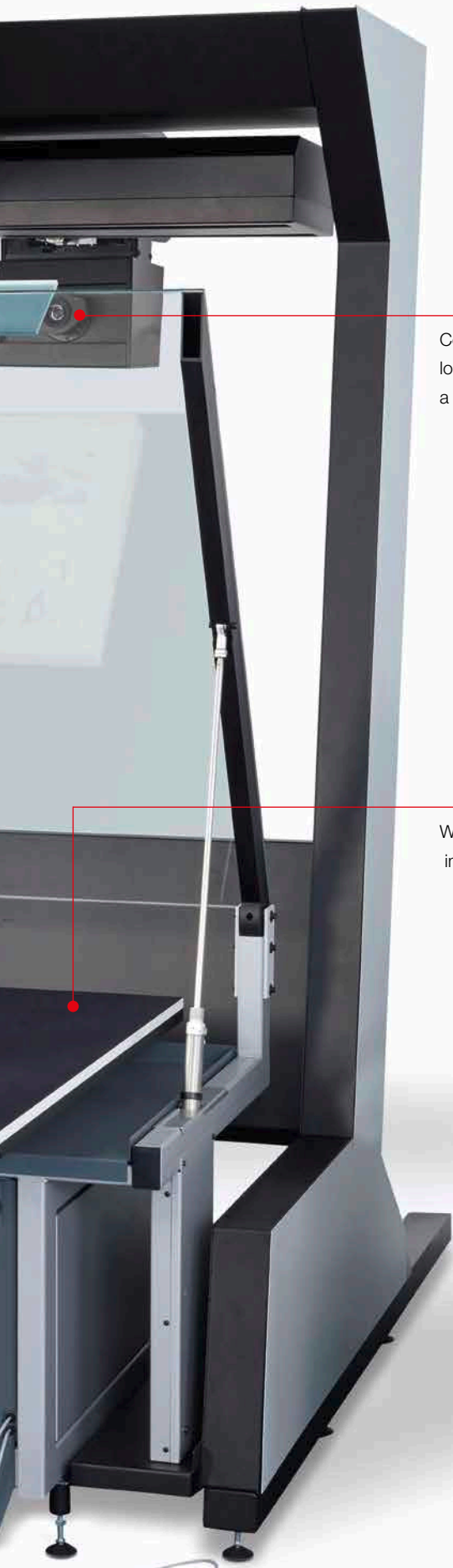
ISO 19264-1 (Level A)
FADGI 4 Star
Metamorfoze

LED lighting system for reflection-free
and shadow-free results

Perfect interplay between high-quality
technical components

Ergonomic work method for the
highest quality demands





Completely new and self-developed camera system based on a CMOS sensor.

Wide range of interchangeable imaging systems

Product advantages

- Resolution of up to 600 ppi
- Fulfills ISO 19264 / Quality Level A, Full Metamorfoze and FADGI****
- Internal image processing with 96 bit depth
- Data output in 48 bit/24 bit color and 16 bit/8 bit degree
- True RGB capture on each pixel (no color interpolation)
- Color rendering index CRI >97 of LED lighting
- True parallel scanning
- Camera Link interface for fastest image transfer
- Optical zoom (optional)
- Variable lighting times and aperture settings
- Interchangeable lenses including macro lens
- Imaging systems for a wide range of formats
- OmniScan software with 48 bit data output
- Focused line lighting for glare-free operation
- Fastest scanning speed
- Perfect Book – 3D scan technology for perfect book fold correction
- Parallel scanning and saving process based on 64 bit technology and multi-threading
- Scanning in both directions, forwards and backwards
- High productivity based on ROI scan function (limitation of the area to be scanned)
- Color rendering corresponds to the original
- No UV/IR radiation
- No reflections with high-shine originals
- Ergonomic work method with or without glass plate



■ LED lighting system for reflection-free and shadow-free results



■ Camera system based on a CMOS sensor with optional optical zoom



■ Perfect interplay between high-quality technical components



■ wide range of interchangeable copyboard systems



■ fulfills ISO 1964 / Quality Level A, Full Metamorfoze and FADGI****



■ high depth of focus - electronic shutter



■ Bookholder on Copyboard OT 180 H 35 XL



■ Kit 90°



■ Toplight Table AT 0 with opened glass plate

Technical Data

OS Q0

Camera Sensor	RGB line sensor (3-channel, CMOS technology)
Resolution	6,3 lp/mm size >A0 (up to 9 LP / mm with optical zoom)
Recording System	wear-free mechanical shutter, variable exposure time, electronically adjustable shutter; automatic white and black balance, variable depth of focus
Max. Original size	> DIN A0
Max. book thickness	with book cradle OT 180 H A0 - 220 mm with book cradle OT 180 H 35 XL - 350 mm with book cradle OT 180 H 50 XL - 500 mm
Scan unit	CMOS RGB sensor
Scan mode	color: 96 bit / output 48 bit / 24 bit Grayscale: 32 bit / output 16 bit Scanning
Scanning speed (from start to end of scanning process) in A0	200 ppi – 5 sec. 400 ppi – 7 sec. 600 ppi – 10 sec.
Scanner interface	Camera Link
Zoom (optional)	A0 – A2
Resolution	100 – 600 ppi
Electrical data / safety	
Voltage	110 – 240 V
Frequency	50 – 60 Hz
Max. Consumption	440 W
Safety inspections / authorizations	- Authorization in accordance with the IEC agreement (international authorization for the safety of IT products) - includes EMC, electrical safety, device safety for CE, UL, ETL, CSA) - LEDs tested in accordance with: IEC 62471:2006 “Photobiological safety of lamps and lamp systems”
Dimensions	
Width	1730 mm
Depth (scanner including copy board system)	3000 mm
Height	2200 mm
Copy board Systems	A0: OS 180 H A0, AT 0, vacuum table A0 A1: OT 180 H 50 XL, OT 180 H 35 XL, OT 180 H, OT 180, AT 1, OT 90, vacuum table
Accessories for Copy board systems	Kit 90°, bookend 110° – 140°
Recommended working conditions	
Temperature range	19 – 35 °C
Relative air humidity, non condensing	80 %
Operating System	
Operating System	Windows 10 (64 bit)
Scanning software	min. OmniScan OS 12.12 (64 bit)

Technical changes reserved

For more info visit **Genus**
www.genusit.com/book-scanners/zeuschel/osq