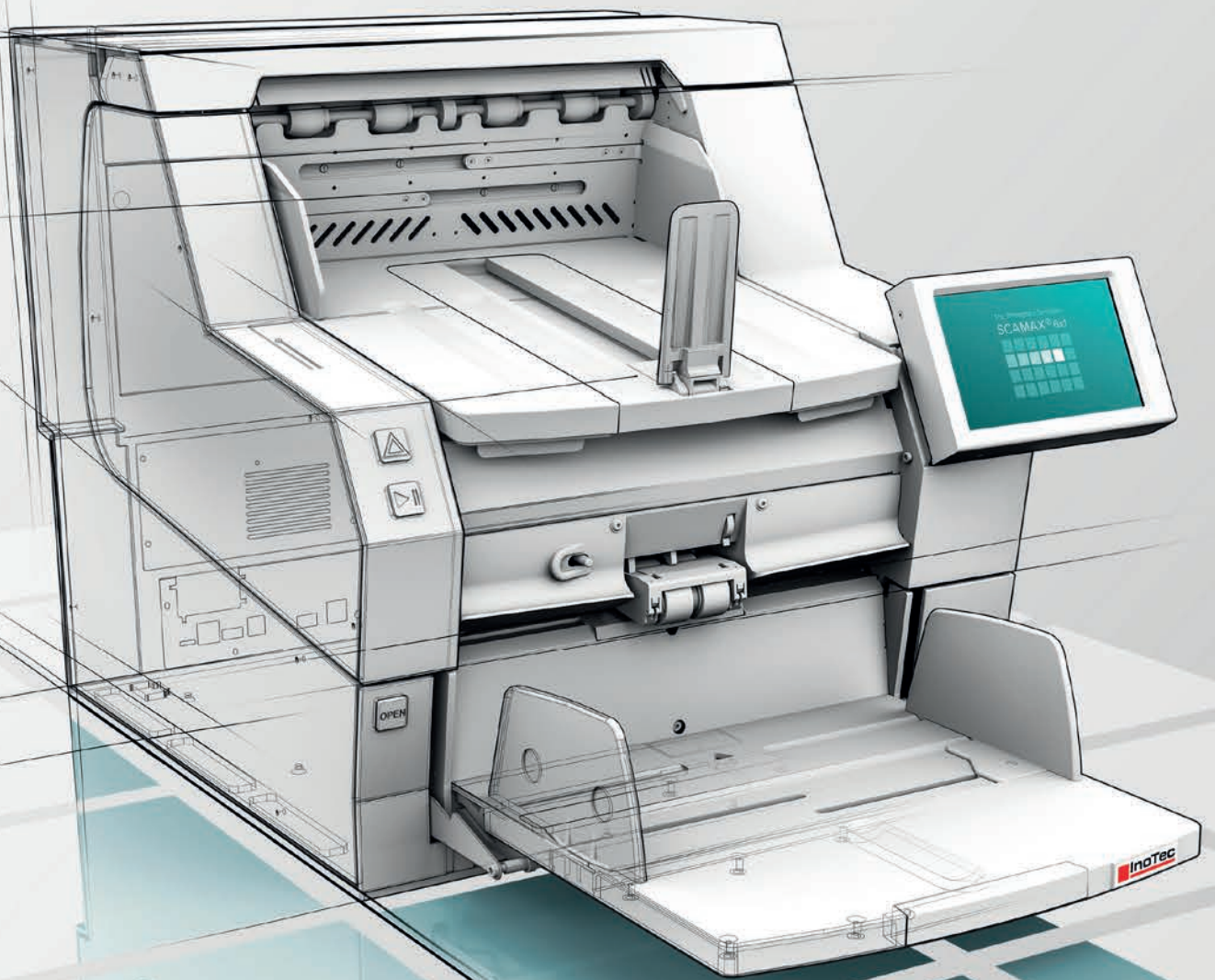




SCAMAX® 6x1

■ ■ ■ The Throughput Sensation



Production Scanners Made in Germany

Brings throughput to your desk

Our compact throughput sensation provides genuine 24/7 production scanning.

The SCAMAX® 6x1 is as compact as a table device but it scans with the power and the capacity of a high-performance scanner: faster, with greater persistence and more reliably than any scanner of its size. Developed for 24/7 operation and manufactured 100% in Germany, it sets standards with regard to document throughput, scanning quality, sorting options, process efficiency and user-friendliness. Thus it easily masters your recurring or consecutive large-scale scanning projects at the touch of a button: from inbox scanning and archiving and up to commercial scanning services.

ECM professional journals say: "The SCAMAX® 6x1 ranks among the table scanners with the highest throughput in the world". We say: the SCAMAX® 6x1 is an InoTec production scanner, Made in Germany. And what do you say?

Arrange for a trial period today. We're looking forward to your call.

Performance Upgrade

More work on the desk?
More power in the scanner!

SCAMAX® 631 | 210 sheets/min.

SCAMAX® 621 | 180 sheets/min.

SCAMAX® 611 | 150 sheets/min.

SCAMAX® 601 | 120 sheets/min.

All the scanners of the SCAMAX® Series can be upgraded at any time on site at your premises. Thus you simply respond to increasing scanning volumes or sorting requirements with increasing performance – while enjoying the greatest possible investment security. Another smart idea from InoTec for even more economic and ecological sustainability.

Scanner Performance

Specifications for Bitonal/Color 200/300 dpi	SCAMAX® 601	SCAMAX® 611	SCAMAX® 621	SCAMAX® 631
SIMPLEX A4 landscape	120 sheets/min. 120 pages/min.	150 sheets/min. 150 pages/min.	180 sheets/min. 180 pages/min.	210 sheets/min. 210 pages/min.
DUPLEX A4 landscape	120 sheets/min. 240 pages/min.	150 sheets/min. 300 pages/min.	180 sheets/min. 360 pages/min.	210 sheets/min. 420 pages/min.

The scanning speed is dependent on various factors such as paper size and texture, PC configuration and the scan application.

Speed is a number. Throughput is a fact.

No question about it: the fastest possible scanning speeds are a requirement for time-efficient scanning. Such speeds are significant however only when they are maintained reliably for many hours at a time or during complete shifts. Without stops. And without errors. Only then can high throughput be assured. And only then do we at InoTec name it: 24/7 production scanners. Or in other words, if you want to make real headway, you need both speed *and* endurance.

CONTACT US

(024) 7625 4955
www.genusit.com
info@genusit.com
Hammond Close, Nuneaton,
Warwickshire, CV11 6RY,
United Kingdom



InoTec Organisationssysteme

At InoTec we optimize the business processes of our customers around the world with our highly trustworthy production scanners and excellent service. We have been doing this for more than 30 years. And we are still as keen on it as on the first day. Technical precision, long service life and sustainability as well as product and service quality Made in Germany are our commitment to our customers. And the demand we place on ourselves. We allow ourselves to be measured by this. With every single system.



Perfect Document TECHNOLOGY

Perfect Document Technology for complete image processing on board: among other things, gamma correction, bicubic deskew, cropping and dynamic binarization for perfect bitonal images. In addition, Perfect Document Technology offers functions like multistreaming (simultaneous output of color, grayscale and bitonal images), automatic blank page detection, content based rotation, automatic color detection, patch-code controlled color change-over and much more.



Top Features

- **Imprinter HD (optional)**
 for imprints of the highest quality at maximum scan speed. Print resolution: 300, 600 and 1,200 dpi. Printing height: 14.2 mm. Text size: adjustable up to 4 lines and barcode printing.
- **Belt transport system, gentle to paper**
 for safe transportation even of difficult documents: wear-free, maintenance-free, cleaning-free.
- **Up to 5 sorting pockets (optional)**
 in combination with SCAMAX® Sorter. For event-controlled sorting at full scan speed
- **Traffic light logic**
 for fast, intuitive handling.
- **Speed selection**
 for touch-screen controlled adjustment of the scan speed, even during the processing of the scan project (for the models 611 through 631). A specific scan speed can be assigned by the scanner settings to every scan project.
- **Variable input pressure**
 for optimized document input depending on document quality and size.
- **NoSCRATCH glass guide**
 for guaranteed scratch resistance to paper clips and staples (with a three-year NoSCRATCH warranty on glass guides).
- **Readily accessible transport path**
 for easy cleaning and fast removal of jammed documents.
- **SlowDown Modus**
 for scanning with reduced scan speed for critical document types.
- **FADGI*** & ISO 19264-1: Level B**
 Proven scan quality according to the digitization guidelines for archiving of technical documentations, cultural heritage materials and many other documents.
- **Transport width and scan width up to 317.5 mm**
 for processing tabs and separating pages.
- **Large 7" Multi-Touch Communication Panel**
 for maximum user friendliness and intuitive operation. With easily understandable pictograms, traffic light logic and clear full text messages.
- **Document sorting at full scan speed**
 in the rear output tray, by event control: e.g. by patch-code, counter, document length, barcodes (1D & 2D) etc.
- **Straight paper throughput**
 by means of rear document output with active switch (admission height 2 mm).



Product videos

Scan the QR code to experience the product features in live operation.

Scanner Specifications

SCAMAX® 601 | 611 | 621 | 631

General Technical Specification

Scanning Method	CCD line camera
Illumination	LED Illumination (diffuse)
Optical Resolution	600 dpi
Output Resolutions	75, 100, 150, 200, 240, 300, 400, 600 dpi dual or multi resolution possible
Output Compressions	CCITT Group IV, JPEG, PDF/R (Raster), TIFF or uncompressed
Color Image	24 Bit, 16.8 million colors (True Color)
Gray Image	8 Bit, 256 gray levels
Bitonal Image	1 Bit color depth, bitonal
Daily Volume	Unlimited
Throughput ⁽⁴⁾ (by A4 landscape, 200 and 300 dpi, bitonal and color)	120, 150, 180, und 210 sheets/min, (upward models 601, 611, 621 and 631) with upgrade option
Warranty	12 month
NoSCRATCH-Warranty	36 month on glass guide
Digitization Guidelines	FADGI: ***, ISO 19264-1: Level B

Image Processing / PDT (Perfect Document Technology)

Image Orientation	Bicubic skewness correction with black border removal and text-oriented alignment
Gamma Correction	3-level correction (color, black, white)
Color Dropout	Up to three color areas definable
Binarization Method	Dynamic with pixel filters and result preview
Stream Control	Based on Automatic Color Detection and/or Event Control (e.g. Patch Code, 1D & 2D Barcode)
Blank Page Detection	Content-based dynamic procedure with two definable impact areas
ICC profiles	embedding of ICC profiles or conversion to different target color spaces (e.g. sRGB, Adobe RGB1998, eciRGB)

Paper Processing / Handling

Paper Input	Automatically for batch or single sheet input, adjustable paper guide (also asymmetric), integrated support for long documents
Max. Stack Height	75 mm (approx. 750 sheets at 80 g/m ²) defined via profile
Document Width	56 mm to 317,5 mm
Document Length	60 mm to 1950 mm ^{(1) and (4)} Automatic LongDoc mode: extension of the maximum scan length to approx. 15.5 m by internal splitting of the image processing, depending on the selected resolution and chosen paper format
Paper Formats	• ISO formats: A3, A4, A5, A6, A7, B4, B5, B6, B7 • US formats: Ledger, Legal, Letter, Executive, Invoice • User defined format
Maximum Admission Height ⁽²⁾	2 mm (by straight Paper Path)
Paper Weight ⁽³⁾	30 g/m ² to 800 g/m ²

(024) 7625 4955

www.genusit.com

info@genusit.com

Hammond Close, Nuneaton,
Warwickshire, CV11 6RY,
United Kingdom

Input Control	Mechanical paper separation, Double Feed Detection via five, separately definable, ultrasonic sensors and automatic staple/metal recognition
Flow Control	Paper Flow Control (PFC) with optional length control
Scan Areas	Dust-protected with NoSCRATCH Glass Guide, variable height (three levels) with switchable scan background (black/white)
Document Output Front	Output tray in four definable plate angles, adjustable Paper Stop and asymmetrically adjustable Paper Guides, tray extension for long documents (max. 485 mm) and removal aid. Optional instead of front document output tray: event-controlled sorting unit with two or four output trays
Document Output Rear	Rear output by straight paper path, controlled by active switch, to sort out separator sheets at full speed or to handle inflexible documents
Indexing	Sequential ID and four definable, event controlled counters for document indexing, integrated patch code and barcode reader 1D & 2D (e.g. 2/5 Inter- leaved, Code 39, Code 128, QR Code, Datamatrix)
Imprinter SD ⁽⁵⁾	Inkjet imprinter (resolution 96 dpi) with ink management for definable single line printing, prior to scanning on document front side and after scanning on front-/rear side
Imprinter HD ⁽⁵⁾	HD imprinter (resolution 300, 600, 1200 dpi) with ink management for up to four lines printing after scanning on document front-/rear side. Printing height up to 14.2 mm and barcode printing
Imprinter Digital	Digital image print. Content linkable to physical printed information and freely definable
SlowDown Modus ⁽⁵⁾	Reduction of scan speed for safe document handling (20, 40, 70 ppm)

Interfaces

Operation	Via capacitive 7" MultiTouch Communication Panel (MTCP) with integrated user management
Supported OS	Windows 7/8 (32/64 Bit), Windows 10/11 (64 Bit)
Driver	TWAIN™, ISIS® (MS61 ISIS compatible), WIA (on demand)
Scan PC	USB 3.0 (socket type B)
Interface	3 x USB 2.1 (socket type A) for input devices/ storage media. Socket DE-9 for service and up to 4 additional input switches
Certifications	Kofax VRS / Express, TR-RESISCAN ready

Technical Data

Power Consumption	Max. 400 Watt ⁽⁴⁾ , Standby Mode < 0,5 Watt
Electrical Connection	100 - 240 Volt; 50/60 Hertz; max. 4 Ampere
Environmental Conditions	Temperature: 10 - 35 °C / 50 - 95 °F Relative humidity: 30 - 80%
Dimensions	Width: 510 mm / 611 mm (stand width / width with display) Depth: 512 mm / 862 mm / 1.250 mm (stand depth / operation mode / with rear output tray) Height: 521 mm
Weight	64,8 kg (without options)
Noise Emission	Operation ready: max. 46 dB (A) Operation ⁽⁴⁾ : 55 to 59 dB (A)

⁽¹⁾ Restrictions in relation to image processing settings and
resolution are possible

⁽²⁾ Maximum admission height is not equal to the maximum
paper thickness. Dependent on the material

⁽³⁾ Maximum paper weight can vary and ultimately depend
on surface condition and the flexibility of material

⁽⁴⁾ Depending on model

⁽⁵⁾ Optional

Technical changes reserved.



SCAMAX® 6x1

The Feed Scanner for Heritage Collections

Digitize fragile historical documents more productively and cost-effectively than ever before.



Digitize cultural assets more productively and cost-effectively than ever before.

The Expert Feed Scanner for Heritage Collections

The SCAMAX® 6x1 digitizes fragile historical documents tens of times faster than any overhead scanner: **secure, gentle on paper, and FADGI***-compliant.** The 6x1 scanner can be used as a stand-alone solution or as a hybrid solution when combined with overhead cultural heritage scanners from established manufacturers.

This shortens your digitization projects by months, years and decades, and saves you six- and seven-figure personnel expenses in the process.



Especially enhanced for the digitization of historical material

Gone are the days when old, sensitive types of paper from the heritage and cultural assets sector can only be digitized with slow overhead and book scanners, turning archive digitizations into never-ending projects! Now, for the first time, the SCAMAX® 6x1 is a productive feed scanner that has been specifically enhanced for the digitization of historical material and cultural assets.

The SCAMAX® 6x1 gently digitizes loose historical documents tens of times faster than an overhead scanner.

This not only saves time, but also scanning staff. The heritage expert 'Made in Germany' is already being used in numerous successful installations worldwide as a stand-alone solution for archiving historical material. It can also be easily integrated into any existing scanning operation. This makes it ideal for use in hybrid scanning systems.

(024) 7625 4955

www.genusit.com

info@genusit.com

Hammond Close, Nuneaton,
Warwickshire, CV11 6RY,
United Kingdom

The challenges when scanning cultural assets:

- Sensitive and fragile documents
- Partially poor condition of documents (tears, creases and folds)
- Soiling of the scanner due to dirty and dusty documents
- Heterogeneous paper qualities and formats (books, newspapers, photos, index cards, loose documents, etc.)
- Files with bound and loose archive material
- Legal requirements for image quality (FADGI and ISO 19264-1)

The solution so far:
Highest care. Use of overhead scanners. And time. A lot of time.

The solution today:
the SCAMAX® 6x1 and hybrid scanning stations.



This is why the SCAMAX® 6x1 is your heritage expert

- Belt transport system is gentle on documents
- Large paper bending radius
- Straight paper throughput for thicker or particularly fragile paper grades
- Adjustable scan speed and SlowDown mode for delicate pages
- Secure feeding of various document sizes in a single stack (from business card to A3 plus)
- Perfect image quality according to ISO 19264-1 (B) and FADGI 3-star standards
- Hand-feed documents or stack them in the hopper for automatic feeding
- Easy and tool-free cleaning
- Compatible with all common overhead scanners and scan softwares
- Can be quickly and easily integrated into existing solutions



You can **DIY-calibrate** your SCAMAX® 6x1 to fully meet FADGI 3-star in no time, without technical support and without expensive special software!

With the **free InoICC tool**.



"Our customer AL-AHRAM is the preferred archiving service provider of the Egyptian government. AL-AHRAM is highly satisfied with the SCAMAX® 6x1. Especially because the scanner also processes particularly light and sensitive paper types reliably and productively."



"We used the SCAMAX in an on-site digitization project to scan nearly 40 million archival documents. The oldest documents dated from the late 1800s and were brittle and in poor condition. At first the client was concerned about further damage from using a document scanner. However it was quickly demonstrated that the InoTec was an ideal choice to gently capture materials in excellent quality while remaining cost effective."

(024) 7625 4955

www.genusit.com

info@genusit.com

Hammond Close, Nuneaton,
Warwickshire, CV11 6RY,
United Kingdom

The SCAMAX® 6x1 in the hybrid scanning station

One feed scanner +
one overhead scanner +
one scanning software =

incredible efficiency!



Often, collections contain loose as well as stapled or bound documents, all requiring different capture methods. In this case, a hybrid scanning station is the optimal and most resource-efficient solution.

One scanning software serves as an interface for both scanners. All scans within a project are stored in the correct order, named consecutively, and can be exported together and fed into further workflows.

Time-consuming merging of scans is eliminated, while productivity and user-friendliness increase enormously. Switching between scanners in a matter of seconds at the touch of a button.

The SCAMAX® 6x1 can be combined with any overhead scanner to form a hybrid scanning system and can be integrated into any existing scanning solution - regardless of software or manufacturer.



"When digitising a national historical archive, we scanned millions of images from bound accession books, membership records, magazines, newsletters and meeting minutes. Taking into account each material and its structural condition, our operators successfully combined a variety of archival quality scanners into a hybrid scanning system with the use of; planetary scanners for bound materials, microfilm scanners for high-speed microfilm capture and our SCAMAX production scanners for loose materials. This approach extremely accelerated the project and led to incredible results."

DATAWIN GmbH
Biedrichstraße 11
61200 Wölfersheim
Germany
P +49 6036 9708 0
info@inotec.eu
www.inotec.eu

Example calculation

This is how much time (and personnel costs) the SCAMAX® 6x1 can save you!

Assume an archiving project includes 1000 files holding 300 sheets each. 95% of these are to be captured by a feed scanner.

Total processing time

...with two overhead scanners and two scan operators:

approx. 13 years

...with a hybrid scan system (one overhead scanner and one SCAMAX® 6x1) and one scan operator:

approx. 1.5 years

(the SCAMAX® 6x1 only accounts for 8 hr/day for 40 working days)

* Assuming a processing time per sheet (front and back) of approx. 10 sec: 300,000 sheets x 10 sec = 3,000,000 sec = 8 hr/day for 6,250 days = approx. 26 years at 240 working days per year.

** Assuming a gross scanning speed of 120 sheets/min and 25% as realistic net throughput as well as 4 hours of effective scanning operation.

Contact us

or your scanning and digitization solution provider today to arrange a free on-site trial of the SCAMAX® 6x1!



Production Scanners Made in Germany



Test it now
for free for
30 days!

SCAMAX® scan+

■ ■ ■ The Performance Booster

High performance becomes maximum performance: this intuitively operated premium scan client fully utilizes the potential of your SCAMAX® production scanner.

InoTec production scanners rank among the most powerful on the ECM market. With SCAMAX®scan+ they reach their peak performance. This cost-effective premium scan client in familiar MS Office look-and-feel makes the entire scope of scanner functions available even at top scanning speed and it can be easily integrated in existing document and content management systems. For the most efficient and highest-quality scanning projects of all sizes.

SCAMAX®scan+ is the premium version of the SCAMAX®scan basic scan client included in the purchase price of every SCAMAX® scanner. Subject to a licensing fee, SCAMAX®scan+ includes numerous expanded functions and image processing options.

Function	SCAMAX® scan	SCAMAX® scan+
Single scan / batch scan	■	■
Dual stream / Multi stream	■	■
Second TWAIN source	■	■
Max. pages displayed	2	8
Thumbnail view / tree view	■	■
Freely definable shortcuts	■	■
Freely configurable project templates	up to 2	∞
Use of scan counters	■	■
Blank page detection via scanner info or post scan	■	■
Deletion marker for detected blank pages or manual	■	■
1D / 2D barcode recognition via 3 integrated engines **	■	■
Character recognition OCR (Open Source)	■	■
Document separation via scanner (barcode / patch / counter)	■	■
Document separation, internal (barcode / OCR / manual / etc.)	■	■
Indexing via scanner information, barcode, OCR and manual	■	■
Manual image processing (post scan)	■	■
Output format: TIFF, multipage TIFF, JPEG	■	■
Output format: PDF/A and others *	■	■
Output files: index, signal, TXT, XML, etc.	■	■
Customizing possible via PowerShell script	■	■
Export process manager in the background (tasks of its own)	■	■
Output to conventional DMS / ECM systems	■	■
Statistic module	■	■
Multilanguage	■	■
Docking windows	■	■
Easy import / export of project templates	■	■
Free updates ^①	■	■
Digital license or hardware dongle (optional)	■	■

SYSTEM REQUIREMENTS

Intel Core i7, 8 GB working memory, Graphic card 1 GB memory, 2 GB free hard disk memory for the software environment, SSD hard disk as temporary scanning image memory

Operating systems supported:
Windows 7 / 8.x / 10 / 11

* = BMP, GIF, J2K, JP2, JPG, PDF/A, PNG, PNM, PSD, TGA, TIF, WMF

** = Codabar, Code 128, Code 32, Code 39, Code 93, Data Matrix, EAN 13, EAN 8, Interleaved 2/5, Patchcode, PDF417, Postnet, Plus 2, Plus 5, QR Code, UPC A, UPC E

^① within a major version

Version v03 - Stand 12/03/2024

(024) 7625 4955

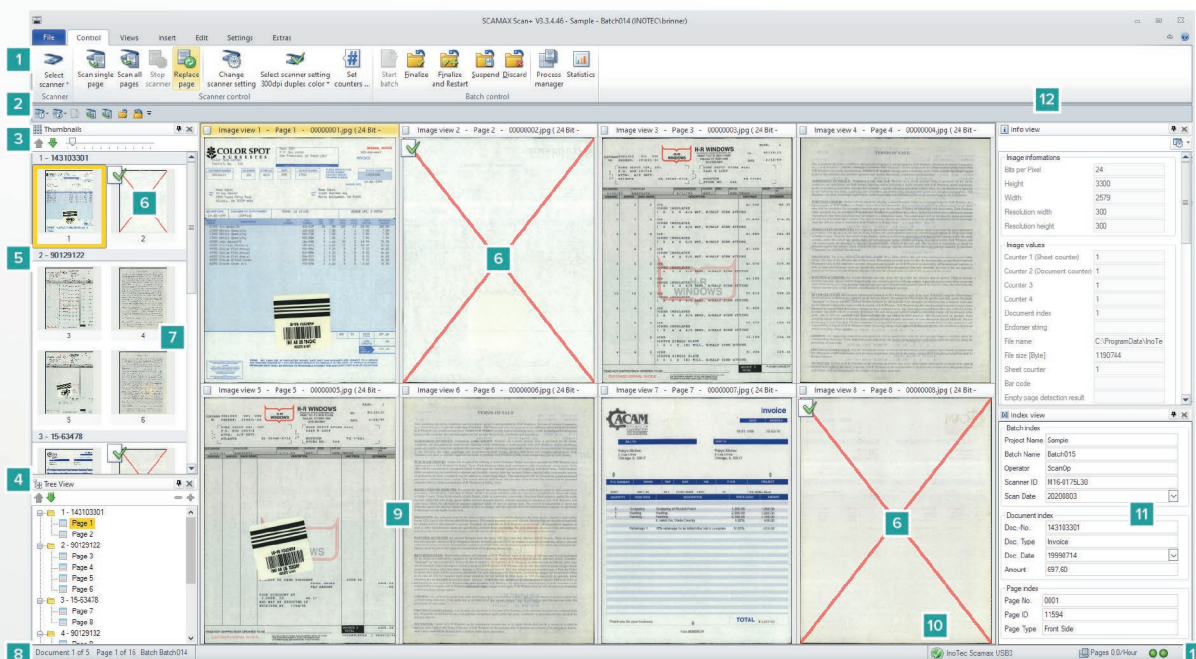
www.genusit.com

info@genusit.com

Hammond Close, Nuneaton, Warwickshire, CV11 6RY,
United Kingdom

Clearly arranged for intuitive operation

The multilingual program surface in office design offers easily understandable symbols and a freely definable quick function toolbar.



- 1 Function toolbar with easily understandable symbols
- 2 Freely definable quick function toolbar
- 3 Thumbnail view
- 4 Tree view
- 5 Document separation
- 6 Blank page detection with deletion marker

- 7 Page counter
- 8 Document and page counter display
- 9 View of the scanned images

- 10 Scanner status
- 11 Index window
- 12 Info window
- 13 Display of the scanning performance



Would you like to test SCAMAX® scan+ free of charge?

Just scan the QR code and try out the full version free and without obligation for 30 days.

High performance scan client for digitizing and capturing documents

Superb price/performance ratio – free updates

Ideal for SME, scanning service providers, banks, insurance companies and public authorities