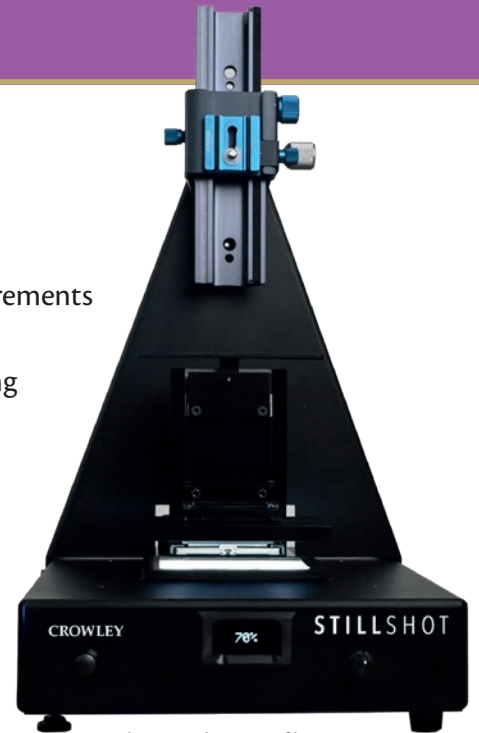


Crowley Still Shot

FLEXIBLE • PORTABLE • DURABLE

The StillShot, is a reliable and adaptable solution crafted to cater to the requirements of archival film digitisation. Boasting a sturdy build, user-friendly design, and advanced features, this copy stand delivers stability and flexibility for capturing images of exceptional quality. Utilise your preferred camera, macro lens, and software to capture mounted 35 mm slides, 35 mm strip film, medium format frames and film strips up to 6 x 8 inches.



Shown with 35 mm film mount

Key Features

Modular Design

Modular components allow for enhanced customisation and adaptability to different imaging setups. Users can configure the stand to meet specific project requirements.

Archival Light Source

High quality remote phosphor light is kept separate from film to reduce risks associated with temperature sensitive films.

Quick Release Camera Plate

The quick-release plate facilitates fast and secure camera attachment and removal.

Portable

A compact and collapsible design allows for easy storage and transportation. Lightweight construction ensures portability without compromising stability.

Compatibility

Designed with a standard Arca-type mount to accommodate a wide range of cameras, including medium format bodies, DSLR's and mirrorless cameras.

Sturdy Construction

Built with high-quality aluminum for durability and stability, ensures compatibility with a wide range of cameras and equipment.

Vibration Dampening

Built-in vibration dampening features minimise vibrations and ensures stable imaging, particularly during long exposures.

Micro-Adjustment Controls

Micro-adjustment controls allow for precise alignment, focus and lighting. This ensures optimal image capture in archival digitisation workflows.

Adjustable Height

An adjustable height column allows for the precise positioning of the camera relative to film.



The StillShot is sturdy and easy to use. Each of the three film holders has a clever design and can get the film to lay completely flat while not having anything on top of it, which is perfect when digitising to customer standards.



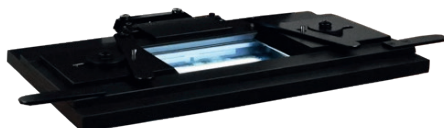
Film Mounts



35 mm film strips



35 mm slides



Medium format film strips



Fully Equipped Version

Technical Specifications

Dimensions	Base unit only: 12 x 10 x 16.75 inches (304.8 x 254 x 425.45 mm)
Weight	Base unit only: 6 lbs/3 kg
Lighting	Remote phosphor light source, 96 CRI
Camera Support	Arca-type clamp with focusing rail
Camera Mount	1/4 inch thread
Focus Adjustment	Automatic and manual
Software	Customers preferred software
Compatible Film Types	Mounted 35 mm slides, 35 mm strip film, medium format frames and strips up to 6 x 8 inches
Standard Features	1) Crowley StillShot base unit; (1) Quick release camera plate; (1) Focusing rail
Power Requirements	110 - 240 V 50/60 Hz; 220 W max
Camera Options	Accommodates wide range, including medium format, DSLR's and mirrorless

*Price varies based on film mount selected

HAMMOND CLOSE • NUNEATON • WARWICKSHIRE • CV11 6RY • UNITED KINGDOM

T: (024) 7625 4955 • F: (024) 7638 2319 • E: info@genusit.com

Registered in England as J. & J. Negus Ltd • Company Reg No. 1168979