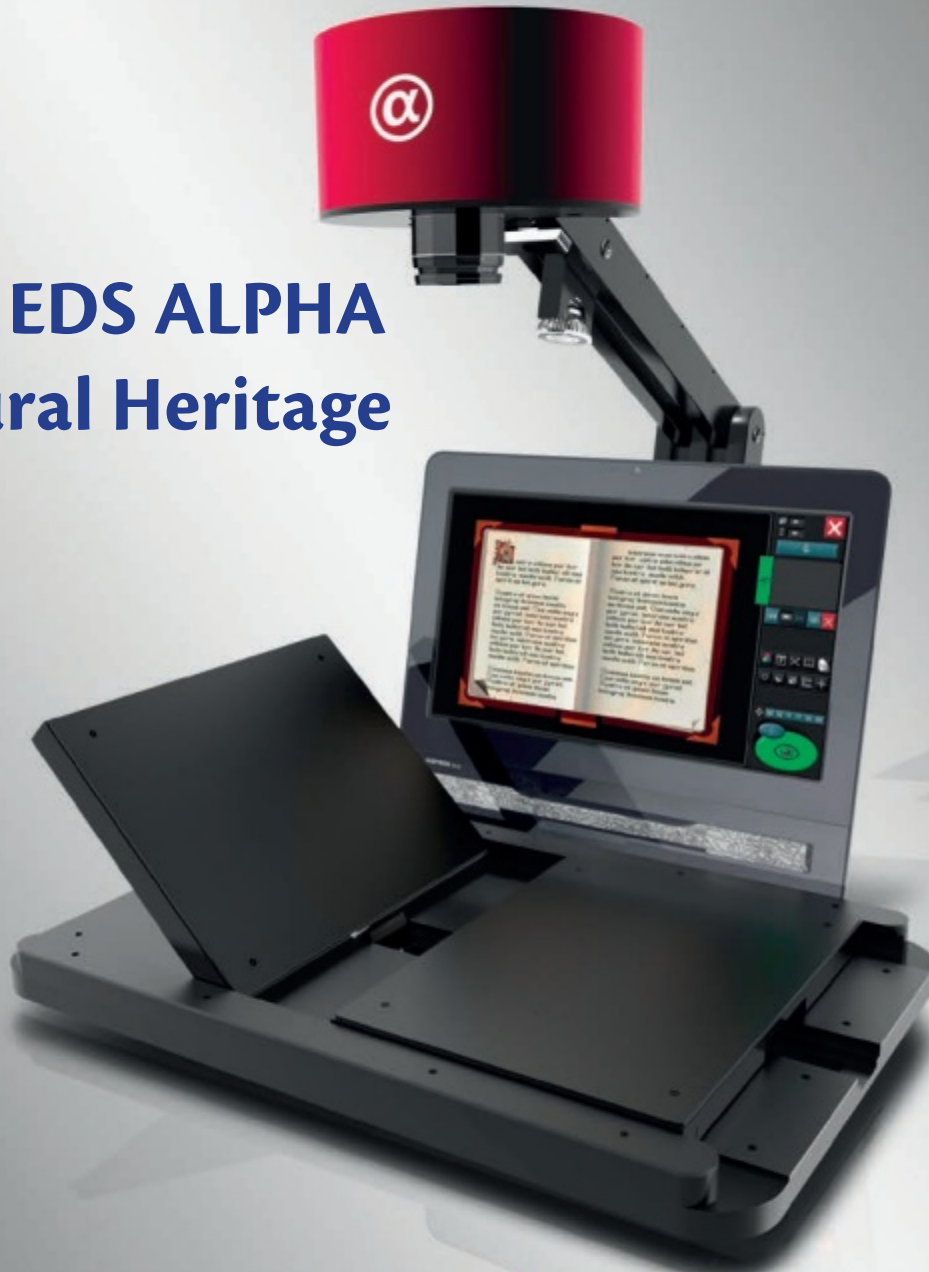


High Quality Scanners



METIS EDS ALPHA - Cultural Heritage



The innovative A3/A2 desktop planetary scanner with a superior image quality, ergonomics and high productivity in a unique integrated solution.

EDS (Easy Digital Scanner) means great quality, speed and ease of use.

METIS TECHNOLOGY

Maximum acquisition format A2 +
Optical resolution up to 600 PPI



The EDS software runs under Microsoft Windows 10 on a standard PC. Optionally, an LCD creen or "touch screen" or "all in one PC" can be integrated directly into the EDS system through a standard "VESA 75/100" mount.

Lighting Kit (optional)



Integrated Screen / PC (through VESA mount)

The V-Table design

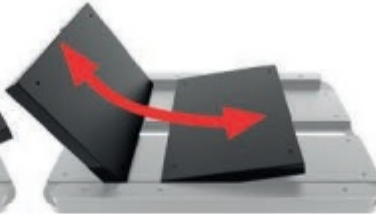
The EDS ALPHA integrates an innovative V-Table design supported by specific software tools in order to hold the originals in any possible position/angle. The V-table has been specifically designed by Metis in order to accept and gently hold different kind of originals in an optimal manner, even antique books with limited opening angle. The V-Table allows scanning large books, maps, drawings and many types of originals even larger than the A2 format and up to 10 cm of thickness. Thanks to the METIS exclusive "shape recognition" and "curvature correction" technology integrated into the EDS software, the document shape is detected in real time and the acquired image is deskewed in a fraction of second delivering a perfect result.



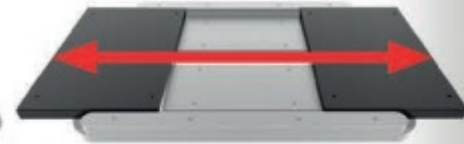
Plates can be tilted independently ▶



▶ Example 1



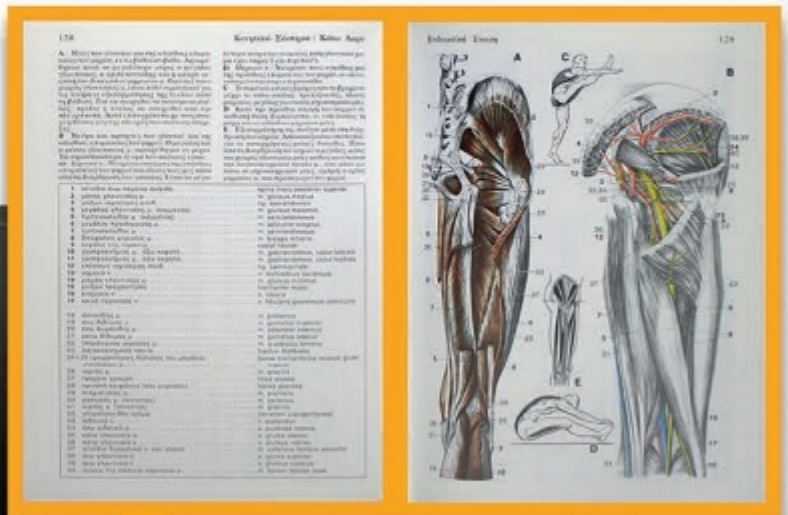
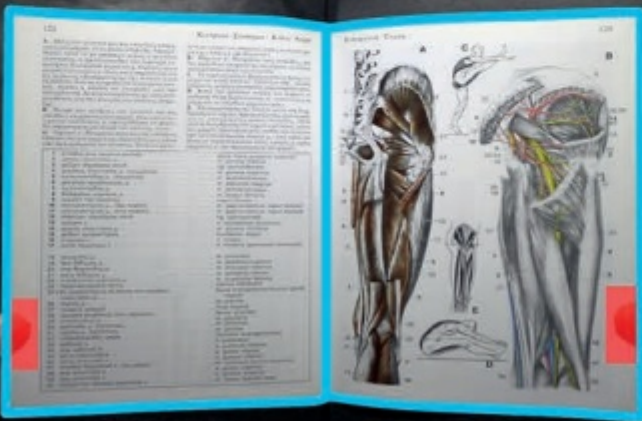
▶ Example 2



Plates distance may also vary independently

Automatic shape and finger recognition

The METIS EDS software is capable of recognizing the shape of the pages and the operators fingers. Furthermore, the acquisition can be automatically triggered when the fingers are recognized.



Automatic curvature correction and finger removal

After recognition, METIS EDS software is able to correct the curvature and to automatically remove recognized fingers from the image.

EDS ALPHA system



STATE OF THE ART TECHNOLOGY
Detail aquired at 300 PPI

The EDS ALPHA

The EDS ALPHA is an innovative A3/A2 desktop planetary scanner, the first born in the METIS EDS Digital Scanner). The EDS is a special line of professional scanners designed and manufactured in order to overcome the usual limitations inherent this category of products. In particular, it offers a superior ergonomics, ease-of-use and high productivity in a unique integrated solution.

family (Easy
2011 by METIS
rior image quality,

Among the main EDS-ALPHA characteristics we highlight:

- Maximum scan size and resolution can vary according to user needs thanks to the integrated zoom optics; this makes possible to acquire at best originals up to the A2 format and up to 600 PPI.
- Unique METIS V-table solution with automatic shape recognition, deskew, curvature correction and fingers removal features.
- Unrivalled image quality, far beyond any other similar solution.
- Extremely rapid acquisition time (about 30 full scans per minute).
- Comprehensive METIS EDS acquisition software with many powerful and useful tools/features.
- Is extremely easy to use thanks to the EDS software user-friendly "icon based" interface which also supports touch screens.

USB and more

The EDS ALPHA integrates two USB hubs allowing simplified connections (such as for the foot pedal, keyboard/mouse, external HD). An USB foot pedal is provided in order to command a new acquisition freeing the operator hands.

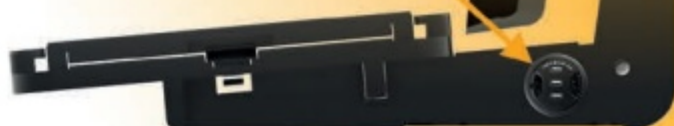


Hands free!

► With external foot pedal



External USB HUB





LIBRARIES

MUSEUMS

ARCHIVES

... and others

SPECIFICATIONS

METIS EDS ALPHA - Cultural Heritage

Technical Specifications

- Supported Cameras: Canon EOS R10 mirrorless 24.2 MegaPixels and Canon EOS 850D reflex 24 MegaPixels
- Integrated Zoom optics with motorized focus. The EDS software supports several optics
- Integrated sensors for realtime reading of exposure, color temperature and automatic focus
- Adjustable working area: it includes the V-table which consists of two tiltable, shiftable and fully independent plates easily adaptable to different needs and perfectly accommodate even difficult original such as old and fragile books with limited opening.
- Maximum acquisition format: higher than A2 (A2 = 594 x 420 mm / 23.4 x 16.54 in)
- Adjustable optical resolution from about 240 PPI to about 600 PPI
- Adjustable output resolution
- Acquisition time < 1 second; full cycle time, between one acquisition and the next one, including acquisition, processing and saving: ~ 2 seconds
- Parallel image processing and saving do not affect the acquisition time; thanks to the powerful algorithms, the processing and saving time is usually extremely fast and is completed in less of one second.
- Lighting kit: optional
- Dimensions: width 67 cm (26,38 in), depth 71 cm (27,95 in); height 80 cm (31,50 in); width with the lighting Kit: about 115 cm (45,27 in)
- Weights: 24 Kg (52,91 lb) without camera, computer and monitor; weight of the lighting kit: 2,5 Kg (5,51 lb)

Minimal PC Specifications

- i5 Intel Processor and 8GB RAM
- 2 x USB-2.0 and 2 x USB 3.0 ports
- Windows 10 or 11 64bit

METIS EDS software specifications

- Color, grayscale or black/white 1bit
- Automatic or manual exposure control
- Automatic or manual focus control
- Automatic or manual gray balance control (light color temperature compensation)
- Software control of image exposure and contrast
- Automatic or manual Crop
- Automatic deskew and curvature correction
- Light uniformity and paper color correction filters
- Automatic book center and shape recognition
- Automatic book page split with used definable overlap
- User definable image orientation
- Automatic fingers recognition and removal filter
- Unsharp masking filter
- "Live Video" function: allows a real-time control over the scanning area; this is particularly useful in order to maximize image quality and to perfectly position the original respect to the camera
- Image review and navigator tools with a full resolution image viewer
- Add/remove/insert shot button
- Automatic image naming with user selectable rules (manual naming, programmable increments, etc.)
- Keyboard shortcuts
- Image saving (24 bit): TIFF, JPEG, JPEG2000, BMP, PNG, PDF, PDF-A, PDF Multipage, TIFF Multipage, TIFFG4 1bit
- Automatic Job handling allowing to reuse saved shooting parameters

Ways to get in touch

- ☎ (024) 7625 4955
- 🖱 www.genusit.com
- ✉ info@genusit.com
- 🏠 Hammond Close, Nuneaton,
Warwickshire, CV11 6RY,
United Kingdom

